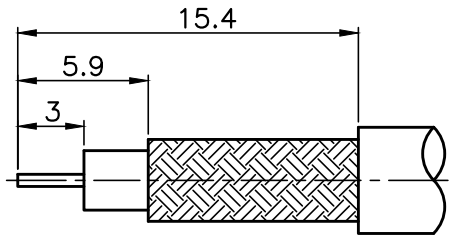
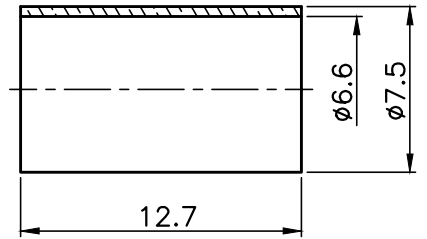
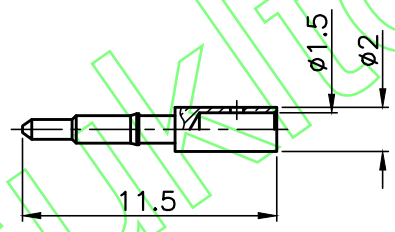
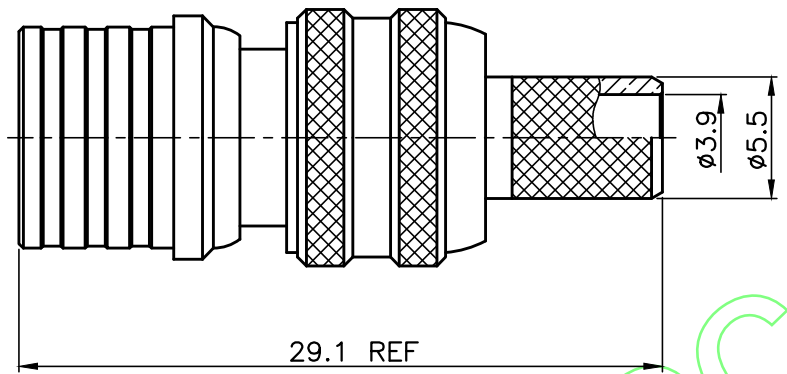


REVISIONS		
ISS	DESCRIPTION	DATE

RoHS COMPLIANT



RECOMMENDED
CABLE STRIPPING DIM'S



1. CRIMPED FERRULE
HEX CRIMP SIZE .255"

CONNECTORS CABLES



TITLE: QMA MALE CRIMP
(FOR LMR240)

PART NO: QMAPCR240

DRAWING NO:

055

APRD:

CHKD:

DR:

UNLESS OTHERWISE
SPECIFIED TOLERANCES
0.5-6 = ±0.2
>6-30 = ±0.4
>30-120 = ±0.6
>120-315 = ±1
>315-1000 = ±1.6
ANGLES = ±5°

DATE: 02/07/17" UNIT: mm

SHEET: . SCALE: 3/1

	O RING	SILICONE	RED
	FERRULE	BRASS	NICKEL
	CONTACT PIN	BRASS	GOLD
	BODY	BRASS	NICKEL
	BODY	BRASS	NICKEL
	INSULATOR	TEFLON	WHITE
	BODY	BRASS	NICKEL
	BODY	BRASS	NICKEL
	SHELL	BRASS	NICKEL
NO.	DESCRIPTION	MATERIAL	FINISH